



*MULTI-POSITION, VARIABLE-SPEED,
ECM-BASED AIR HANDLER
WITH INTERNAL EEV
COMMUNICATING
FOR DAIKIN FIT MATCHUPS
2 TO 5 TONS*

■ **Contents**

Nomenclature	2
Product Specifications	3
Dimensions	4
Heat Kit Data.....	5
Wiring Diagram	6
Accessories	7

■ **Product Features**

- Electronic Expansion Valve (EEV) for cooling and heat pump applications.
- 7mm evaporator coil tube size
- Variable-speed ECM blower motor
- Compatible with Daikin *One+* smart thermostat and other Daikin communicating equipment
- Provides constant CFM over a wide range of static pressure conditions independent of duct system
- CFM indicator
- Thermostat provides adjustable low CFM for efficient fan-only operation
- All-aluminum evaporator coil
- Fault recall of six most recent faults
- Improved humidity and comfort control
- AHRI certified; ETL listed
- Cabinet air leakage less than 2.0% at 1.0 inch H₂O when tested in accordance with ASHRAE standard 193
- Cabinet air leakage less than 1.4% at 0.5 inch H₂O when tested in accordance with ASHRAE standard 193
- 3 kW – 25 kW electric heater kits
- Horizontal or vertical configuration capabilities
- 21" depth for easier attic access
- DecaBDE-free thermoplastic drain pan with secondary drain connections
- Screw-less sides and back helps to reduce condensation when installed in humid locations
- Foil-faced insulation covers the internal casing to reduce cabinet condensation
- Galvanized, leather grain-embossed finish
- Glue-less cabinet insulation retention
- Tool-less filter access

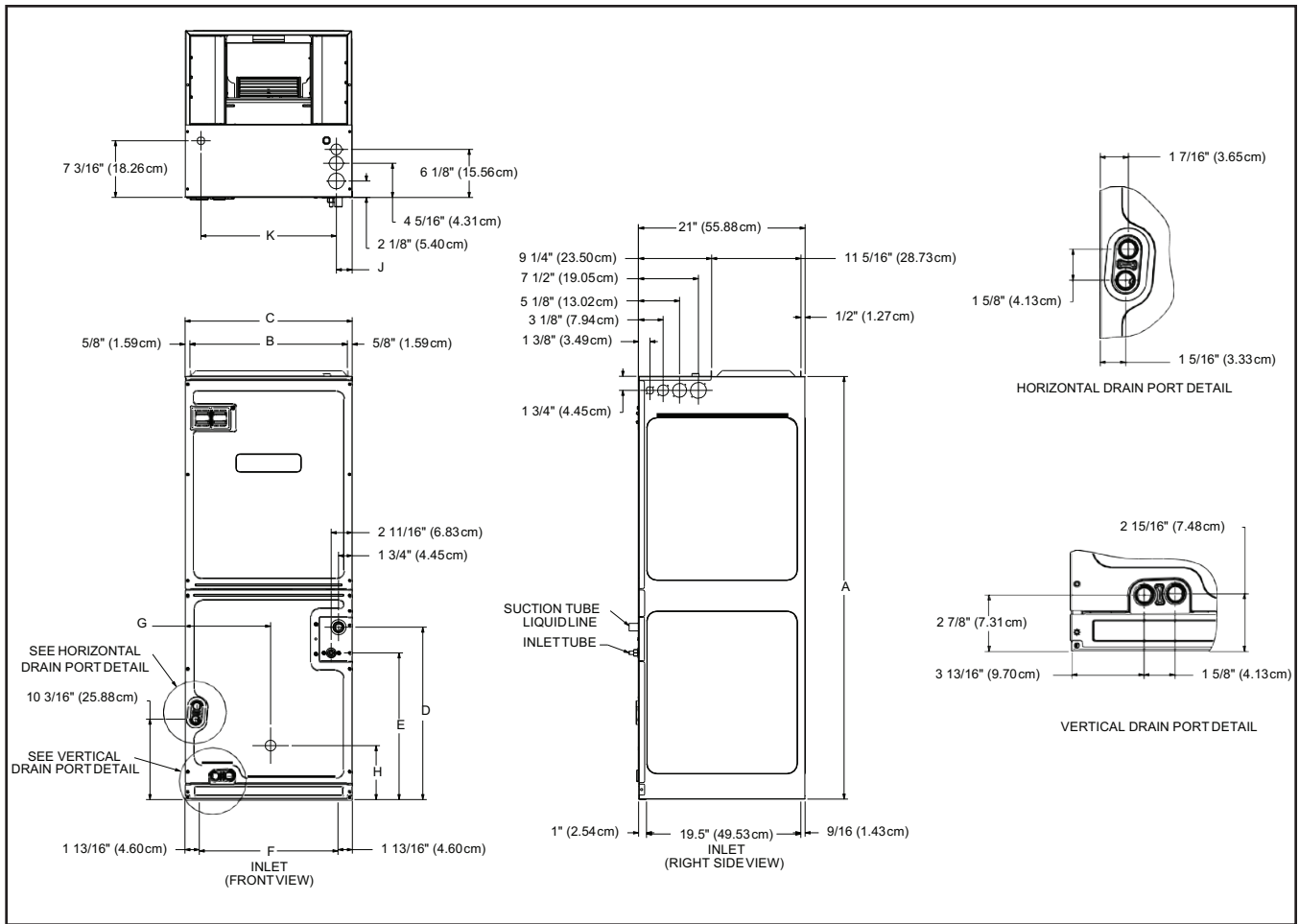


* Complete warranty details available from your local dealer or at www.daikincomfort.com. To receive the 12-Year Parts Limited Warranty, online registration must be completed within 60 days of installation. Additional requirements for annual maintenance are required for the Unit Replacement Limited Warranty. Online registration and some of the additional requirements are not required in California or Quebec.

	D	V	24	F	E	C	C	1	4	AA	
	1	2	3,4	5	6	7	8	9	10	11,12	
Brand	D - Daikin Single-Piece Air Handler										Engineering
											Major & Minor revisions *Not used for inventory management
Unit Application	V - Multi-Position Variable-Speed Motor										Refrigerant Compatability
											4 - R-410A
Nominal Capacity Range	24 - 2 Tons 36 - 3 Tons 42 - 3.5 Tons										Electric
	48 - 4 Tons 60 - 5 Tons										1 - 208/230 V, 1 Phase 60 Hz
System Compatibility / Cabinet Finish (Painted)	F - Fit P - Non-Fit										Cabinet Width
											B - 17½" C - 21" D - 24½"
Expansion Device	E - Electronic Expansion Valve T - Thermal Expansion Valve										Communicating
											C - Yes

	HKS	X	03	X	A	AA	
	1	2	3	4	5	6,7	
Unit Type	HKS Heat Kit for Air Handlers						Revisions
							Engineering Revisions
Circuit Breaker	X No circuit breaker C Circuit Breaker						Phase
							A Single Phase 208 V B Single Phase 240 V C Single Phase 208/240 V D Three Phase 208 V E Three Phase 240 V F Three Phase 208/240 V G Three Phase 460 V
Heating Capacity @ 240 Volts	03 3.0 kW 15 14.4 kW 05 4.5 kW 19 19.2 kW wth 150F limit 06 6.0 kW 20 19.2 kW with 170F limit 08 8.0 kW 25 25.0 kW 10 9.6 kW						Cabinet Size (MAX)
							C C Cabinet D D Cabinet X All Cabinet Sizes

MODEL	DV24FEC B14A*	DV36FEC C14A*	DV42FEC C14A*	DV48FEC D14A*	DV60FEC D14A*
NOMINAL TONS	2.0 Ton	3.0 Ton	3.5 Ton	4.0 Ton	5.0 Ton
BLOWER					
Diameter	9½"	10 ⅝"	10 ⅝"	12"	12"
Width	6"	10 ⅝"	10 ⅝"	10 ⅝"	10 ⅝"
TUBING CONNECTION					
Liquid - Refrigerant	⅜"	⅜"	⅜"	⅜"	⅜"
Suction - Refrigerant	¾"	⅞"	⅞"	⅞"	⅞"
Coil Drain Connection (NPT)	¾"	¾"	¾"	¾"	¾"
ELECTRICAL DATA					
Voltage - Phase	208/230-1	208/230-1	208/230-1	208/230-1	208/230-1
Min Circuit Ampacity	4.9/4.9	6.5/6.5	6.5/6.5	6.5/6.5	6.5/6.5
Max. Overcurrent Device (amps)	15/15	15/15	15/15	15/15	15/15
Minimum VAC	197	197	197	197	197
Maximum VAC	253	253	253	253	253
Blower Motor					
FLA	3.9	5.2	5.2	5.2	5.2
HP	½	¾	¾	¾	¾
SHIP WEIGHT (LBS.)	115	140	140	150	167



MODEL	A	B	C	D	E	F	G	H
DV24FECD14	45	16 5/8"	17 1/2"	15 5/8"	12	14 5/8"	9	12 3/4"
DV36FECD14	53 7/16"	19 5/8"	21	21 13/16"	18 5/8"	17 11/16"	10 13/16"	6 13/16"
DV42FECD14	53 7/16"	19 5/8"	21	21 13/16"	18 5/8"	17 11/16"	10 13/16"	6 13/16"
DV48FECD14	53 7/16"	23 5/16"	24 1/2"	21 1/2"	18 5/16"	21 3/16"	12 5/8"	6 5/8"
DV60FECD14	58	23 5/16"	24 1/2"	26 5/8"	22 5/8"	21 3/16"	12 5/16"	13 3/4"

MODELS	CIRCUIT 1			CIRCUIT 2			SINGLE-POINT KIT	
	HEATER AMPS	MCA ¹	MOP ²	HEATER AMPS	MCA ¹	MOP ²	MCA ¹	MOP ²
DV24FECB14AA	0.0/0.0	4.9/4.9	15/15	---	---	---	---	---
HKS*03XC*	10.8/12.5	18/21	20/25	---	---	---	---	---
HKS*05XC*	17.3/20.0	27/29.9	30/30	---	---	---	---	---
HKS*06XC*	21.7/25	32/36	35/40	---	---	---	---	---
HKS*08XC*	28.9/33.3	41/47	45/50	---	---	---	---	---
HKS*10XC*	34.7/40.0	48/55	50/60	---	---	---	---	---
DV36FECC14AA	0.0/0.0	6.5/6.5	15/15	---	---	---	---	---
HKS*05XC*	17.3/20	28/32	30/35	---	---	---	---	---
HKS*06XC*	21.7/25	34/38	35/40	---	---	---	---	---
HKS*08XC*	28.9/33.3	43/48	45/50	---	---	---	---	---
HKS*10XC*	34.7/40	50/57	50/60	---	---	---	---	---
HKS*15XF*	0/0	6.5/6.5	15/15	30/34.6	38/43	40/45	---	---
HKSC15XA (208)	34.7	49.8	50	17.3	21.7	25	71.5	80
HKSC15XB (240)	40	56.5	60	20	25	25	81.5	90
HKSC19CA (208)	37.7	49.8	50	34.7	43.3	45	93.2	100
HKSC19CB (240)	40	56.5	60	40	50	50	107	110
DV42FECC14AA	0.0/0.0	6.5/6.5	15/15	---	---	---	---	---
HKS*05XC*	17.3/20	28/32	30/35	---	---	---	---	---
HKS*06XC*	21.7/25	34/38	35/40	---	---	---	---	---
HKS*08XC*	28.9/33.3	43/48	45/50	---	---	---	---	---
HKS*10XC*	34.7/40	50/57	50/50	---	---	---	---	---
HKS*15XF*	0/0	6.5/6.5	15/15	30/34.6	38/43	40/45	---	---
HKSC15XA (208)	34.7	49.8	50	17.3	21.7	25	71.5	80
HKSC15XB (240)	40	56.5	60	20	25	25	81.5	90
HKSC19CA (208)	37.7	49.8	50	34.7	43.3	45	93.2	100
HKSC19CB (240)	40	56.5	60	40	50	50	107	110
DV48FECD14AA	0.0/0.0	6.5/6.5	15/15	---	---	---	---	---
HKS*05XC*	17.3/20	28/32	30/35	---	---	---	---	---
HKS*06XC*	21.7/25	34/38	35/40	---	---	---	---	---
HKS*08XC*	28.9/33.3	43/48	45/50	---	---	---	---	---
HKS*10XC*	34.7/40	50/57	50/60	---	---	---	---	---
HKS*15XF*	0/0	6.5/6.5	15/15	30/34.6	38/43	40/45	---	---
HKSC15XA (208)	34.7	49.8	50	17.3	21.7	25	71.5	80
HKSC15XB (240)	40	56.5	60	20	25	25	81.5	90
HKSC20DH (208)	34.7	49.8	50	34.7	43.3	45	93.2	100
HKSC20DB (240)	40	56.5	60	40	50	50	107	110
HKS*20XF*	0/0	6.5/6.5	15/15	37.5/43.3	47/54	50/60	---	---
DV60FECD14AA	0.0/0.0	6.5/6.5	15/15	---	---	---	---	---
HKS*05XC*	17.3/20	28/31.5	30/35	---	---	---	---	---
HKS*06XC*	21.7/25	34/37.8	35/40	---	---	---	---	---
HKS*08XC*	28.9/33.3	43/48.2	45/50	---	---	---	---	---
HKS*10XC*	34.7/40	49.8/57	50/60	---	---	---	---	---
HKSC15XA (208)	34.7	49.8	50	17.3	21.7	25	71.5	80
HKSC15XB (240)	40	56.5	60	20	25	25	81.5	90
HKSC20DH (208)	34.7	49.8	50	34.7	43.3	45	93.2	100
HKSC20DB (240)	40	56.5	60	40	50	50	107	110
HKSC25DA (208)	52	71.5	80	35	43.3	45	115	125
HKSC25DB (240)	60	81.5	90	40	50	50	132	150

¹ Minimum Circuit Ampacity (Heater Amps + Motor Amps) X 1.25

² Maximum Overcurrent Protection = 2.25 X Motor Amps + Heater Amps

* Revision level that may or may not be designated

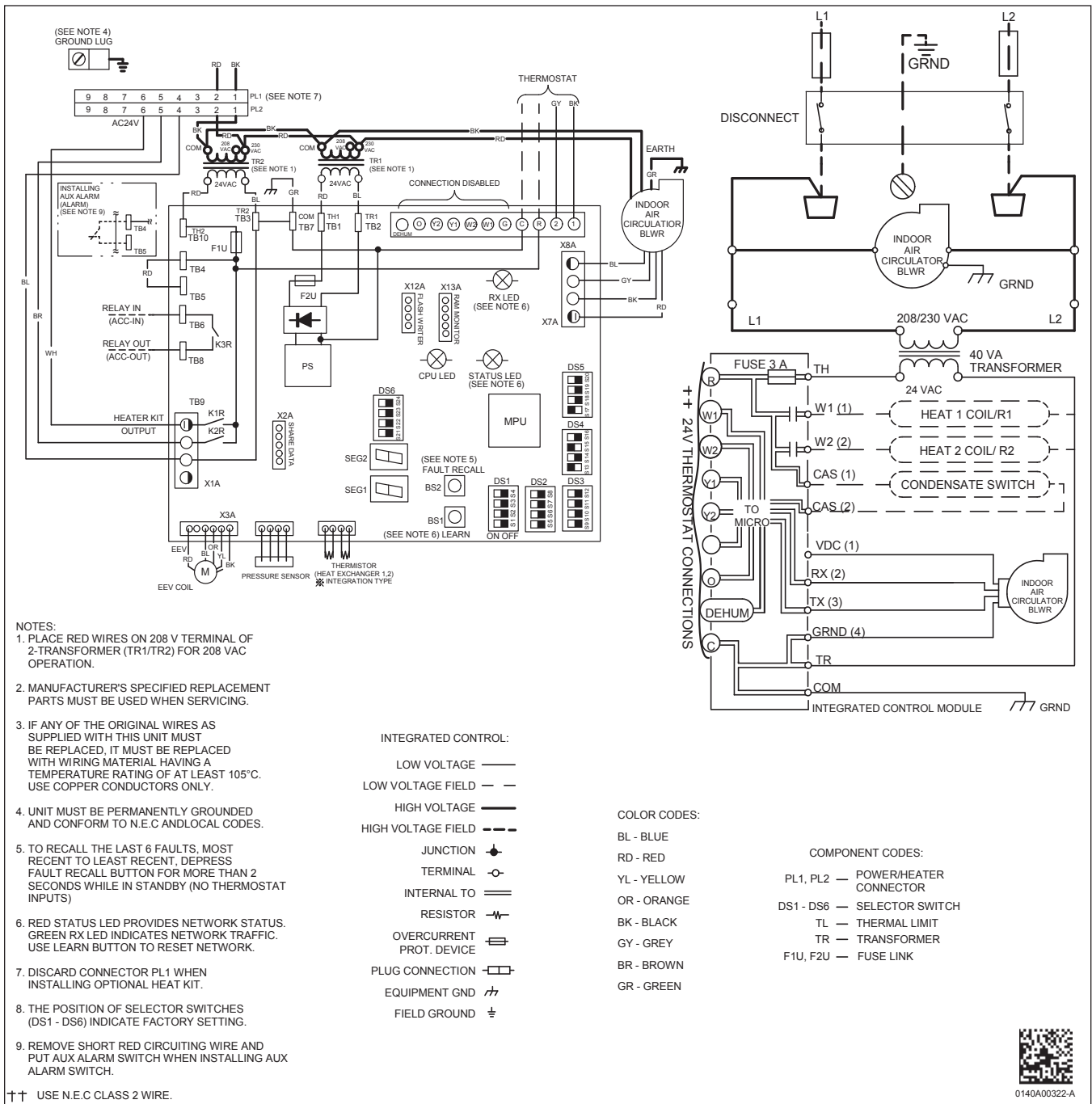
HKSC - CIRCUIT BREAKER

HKS* -

--- indicates Not Required

Note: numbers above designated with two sets of numbers represents incoming voltage of 208 / 240. Example 18/21 is amperage rating at either 208 / 240 V.

WIRING DIAGRAM



Wiring is subject to change. Always refer to the wiring diagram on the unit for the most up-to-date wiring.

	WARNING	<p>High Voltage: Disconnect all power before servicing or installing this unit. Multiple power sources may be present. Failure to do so may cause property damage, personal injury, or death.</p>	
--	----------------	--	--

DOWNFLOW KIT

DFKE-02
DV24FECCB14**
DV36FECC14**
DV42FECC14**
DV48FECCD14**
DV60FECCD14**

CONDENSATE MANAGEMENT KITS*

CMK0015	CMK0016	CMK0017
DV24FECCB14**	DV36FECC14**	DV60FECCD14**
	DV42FECC14**	
	DV48FECCD14**	

*For Horizontal application only.

HIGH HUMIDITY KITS

HHK0001	HHK0002	HHK0003
DV24FECCB14**	DV36FECC14**	DV60FECCD14**
	DV42FECC14**	DV48FECCD14**

MERV 15 AIR CLEANERS

CHASSIS	DAIKIN PREMIUM AIR CLEANER	FILTER SIZE	REPLACEMENT FILTER PART #
B	DV15-2117-AB	21"x17"	0160M00013
C	DV15-2121-AC	21"x21"	0160M00014
D	DV15-2124-AD	21"x24"	0160M00015

PERMANENT 1" FILTERS

CHASSIS	PART#	SIZE
B	ALFH16201E	16.0" x 20.0"
C	ALFH1912201E	19.5" x 20.0"
D	ALFH20231E	23.0" x 20.0"

SINGLE POINT KIT **

MODEL	HKR-15C	HKR-20C	HKR-21C
SPW-01			

** Must be installed along with any of the above compatible heat kits. This kit will fit any DVPTC air handler as long as a compatible heat kit is installed in the unit.

15" SINGLE LAMP UV COIL PURIFIER

MODEL	LAMP	POWER MOD	REM CORD
UC18S15-24	UCP-16013	UCP-16015	UCP-16016
UC18S15-24B	UCP-16012	UCP-16014	UCP-16016

